



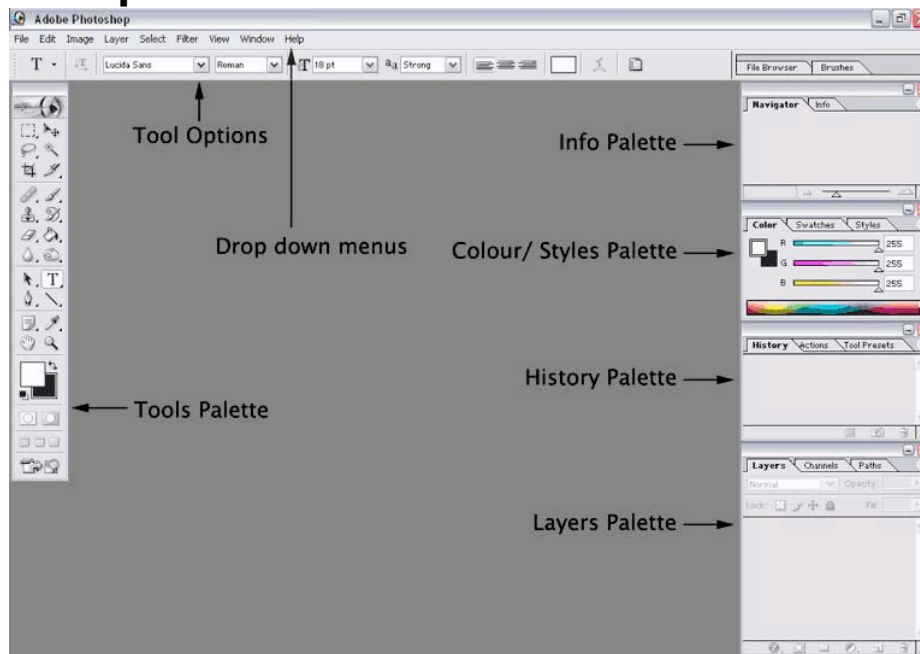
This product is copyrighted by **digitaldesign**

## Easy to create web pages

### Basics of Photoshop for beginners

Photoshop is the program prepared for working with images. Along the way, you'll become familiar with the Toolbox, various palettes, opening and saving files, and the concept of layers.

### The Workspace



#### **Tools Palette:**

Self explanatory - the palette that contains the tools that can be used to directly edit the image.

#### **Tool Options:**

A selection of options that relate to the currently selected tool and alter its effects.



This product is copyrighted by **digitaldesign**

### **Layers Palette:**

The layers palette has many features, and they are described latter on this tutorial.

### Layers

Layers are an integral element of Photoshop. They allow you to edit images more easily, and use transparency to its full effect. By default the background layer (Locked and labeled "*Background*") is white, and any subsequently created layers are transparent by default.

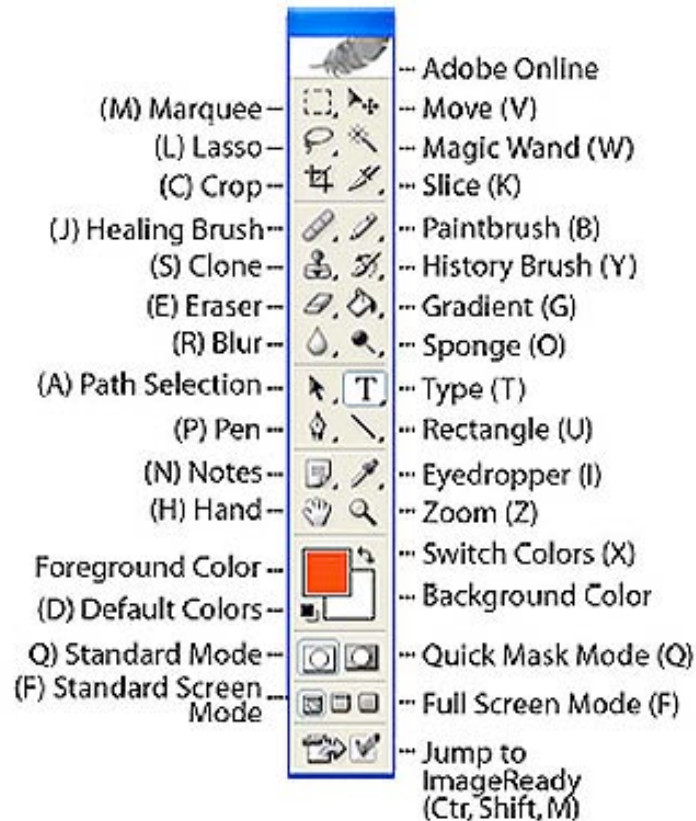
**The layers palette** is in the bottom right of the workspace and contains all the layers present in the active image in list form along with the effects applied to that layer, its visibility and any layers that are linked to it. There are several other features, described here.





This product is copyrighted by **digitaldesign**

## Tools



This section describes how to use some of the basic tools that you will need to use in the tutorials. This section in particular will be added to over time.

The airbrush is the favorite tool of most digital artists. The tool options (just below the drop down menus) can be altered very subtly to achieve a range of effects - this is the most creative aspect of many of these tutorials.



This product is copyrighted by **digitaldesign**

## Making Web pages

Before creating the website we have to know which and what pages you are going to have.

First of all you have to design the layout that you like for the pages, using pictures, colors and text all of this can be done in Photoshop using the Photoshop tools. That way you'll be able to design the pages according your idea or taste.

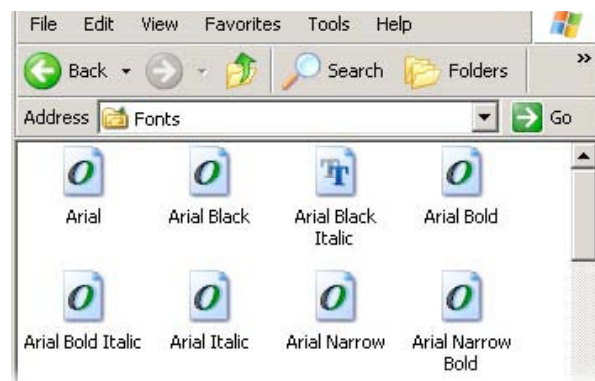
Let's start by:

SAMPLE

### ***Installing Fonts***

This is important because you may like to use a certain type of font on your website that not always is available on our computers.

On Microsoft Windows you should copy and paste all fonts from template package to the **Windows\Fonts** folder or **WinNT\Fonts** if you are on NT based system.





This product is copyrighted by **digitaldesign**

### ***Creating or editing Text***

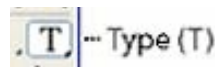
You can add or make a text customisation using Photoshop, If you want to change some of text attributes such as font family, style or colour do the following.

Using old **digitaldesign**'s page as an example:

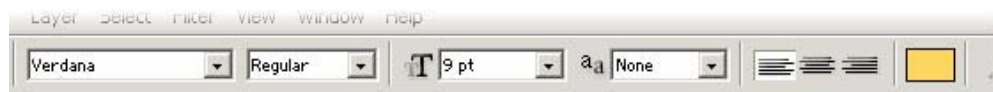
<http://www.digitaldesign.com.au/oldws/digitaldesign/home.htm>



1. To add text on this page select the tool/icon T from the menu



2. Select the text which properties you want to modify. Then go to the options panel.





This product is copyrighted by **digitaldesign**



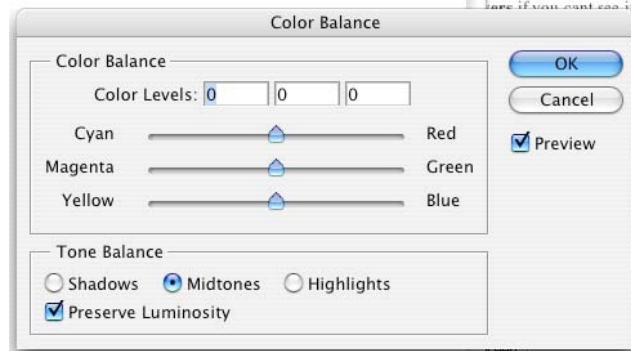
Now, if you want to add pictures to your layout.

### ***Ad pictures in Photoshop***

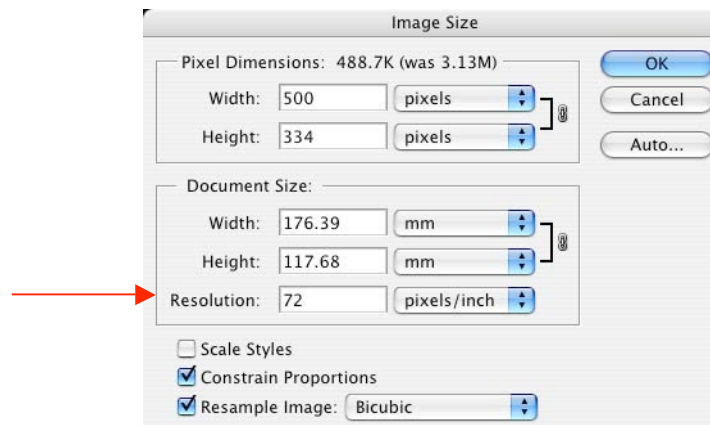
1. Go to **File/Open...** then locate the picture and then **OK**.
2. Your image is going to appear in a separate Photoshop window. From there you can adjust the size of the picture that you want, also crop it using crop tool (hotkey "**C**") or make some colour adjustments to make image fit PDW colour scheme using **Image/Adjustments/Colour Balance...** from the top menu.



This product is copyrighted by **digitaldesign**



3. Now you have to make your image light enough for web, if the image is too heavy it will be difficult to make it very light, remember every picture, every page must be lighter than 50kb. So if that happens go to Image/ Image Size and a window like this will appear;



If you have full colour graphics or photographs you save them as a JPEG at 60% quality.

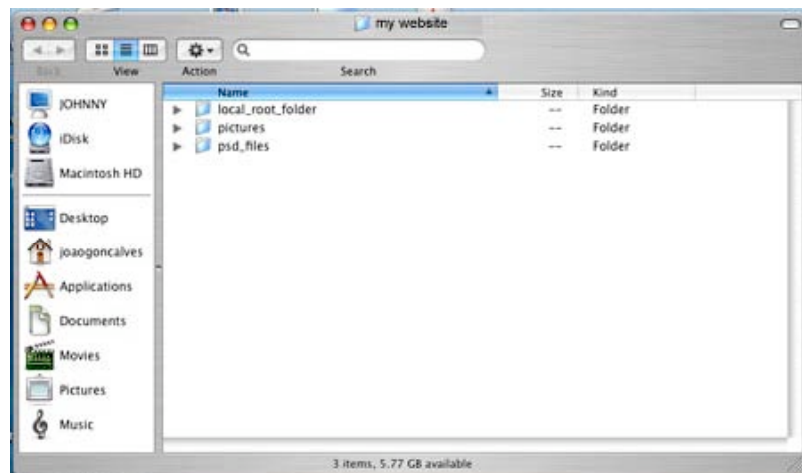


This product is copyrighted by **digitaldesign**

## Stage one:

### Photoshop

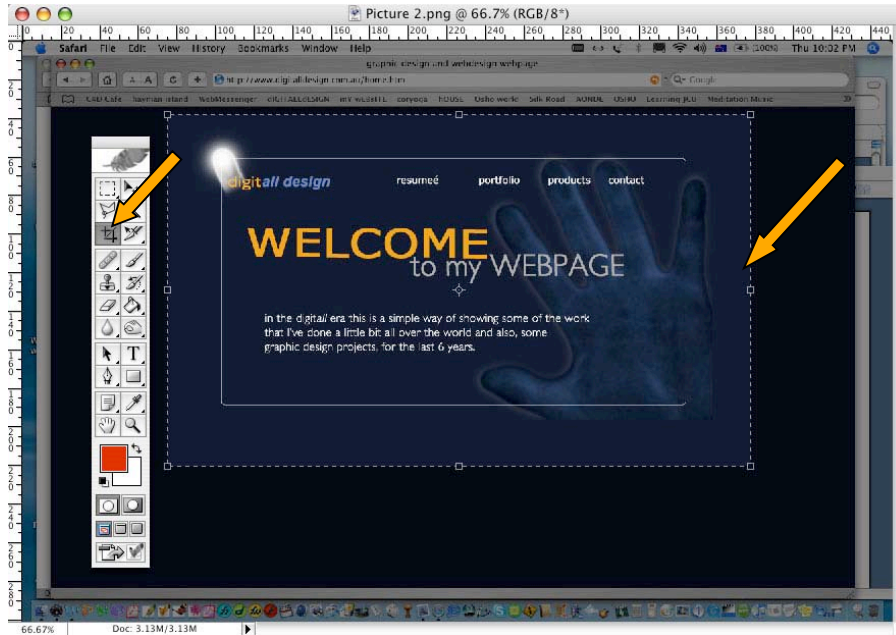
1. Create a new folder on the computer, name it the name of your project, could be something like **my website**, inside of that folder create 3 folders, one called '**local\_root\_folder**' a Local root folder is where all your files will be saved so that Dreamweaver can access them. When working with files for Dreamweaver you cannot use caps or spaces for example: 'Index cell 1one.jpeg' will not work, 'index\_cell\_one.jpeg' will. Create another folder called **psd\_files**, that's where all the Photoshop files will be located and another folder called **pictures** that's where you going to store all the pictures that you'll use on this project, all could be organized like the picture below:



2. In your local\_root\_folder create two more folders one called 'index' the other called 'page\_two'.
5. Now we will use the crop tool to cut off all the extra content we do not require.



This product is copyrighted by **digital**design



6. Now we will begin to make the page into a table of cells, so that we can gather all the information to re-make the page again later in Dreamweaver.

## Stage Two:

# SAMPLE



1. Select the Rectangle Marquee tool from the pallet:
3. Copy this selection by pressing apple>c together
5. Open Photoshop. Open the second photo you took of the 'resumé' homepage by choosing > file > open > desktop > picture 2



This product is copyrighted by **digital**design



## Saving Files for web:

SAMPLE

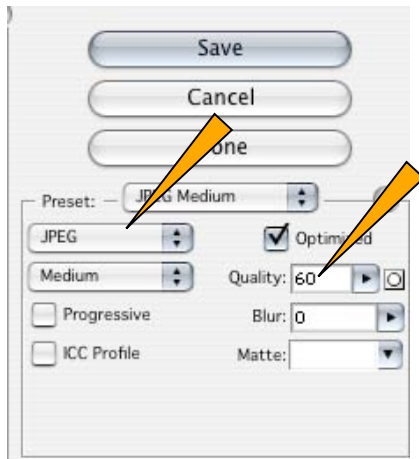
1. Choose > File > Save files for web. The following box appears:





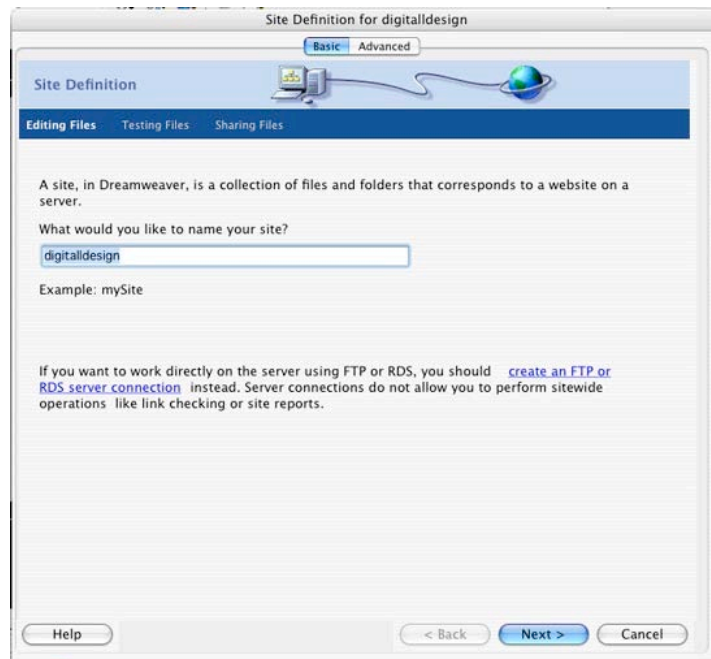
This product is copyrighted by **digitaldesign**

2. If you have full colour graphics or photographs you save them as a JPEG at 60% quality.



SAMPLE

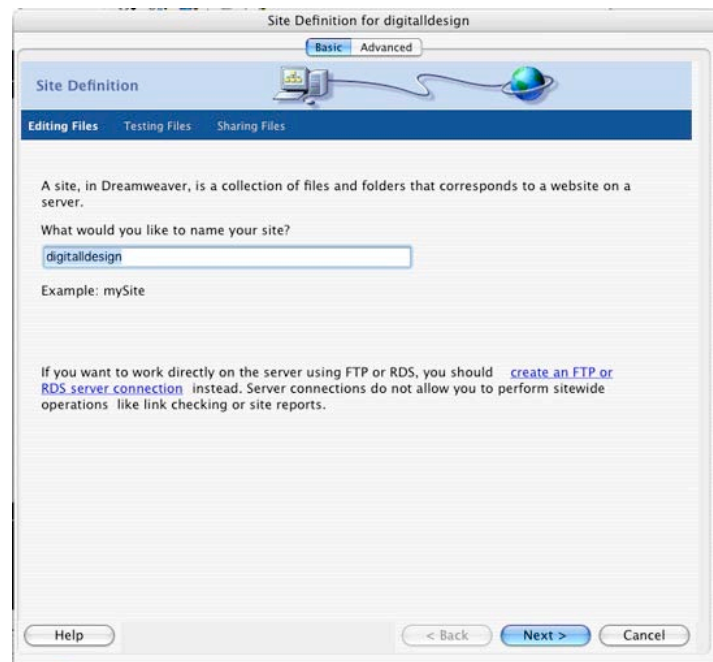
## Stage Three: Dreamweaver





This product is copyrighted by **digitaldesign**

1. Click next
2. Choose 'no' click next
3. Choose edit copies on my machine, then click onto the folder icon to find your local\_root\_folder



4. Click next
5. Choose 'no' click next